

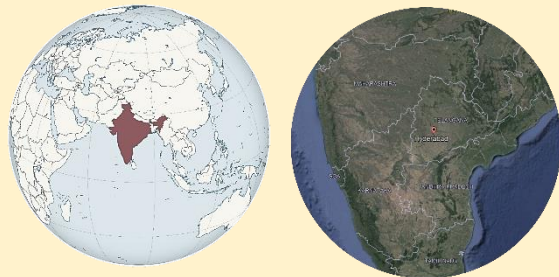


WE CAN SEE A SIGNIFICANT CHANGE IN USE OF BUILDING SPACES IN THESE CURRENT PANDEMIC TIMES, HOWES ARE NOT ONLY SATSFYING THE LIVING NEEDS IT BECAME OFFICES FOR EMPLOYEES AND SCHOOLS FOR KIDS. HENCE IT IS IMPORTANT TO SEGRAGATE SPACES FOR WORKS AND LIVING, WHERE AS THE HIGH INCOME GROUP WHO USUALYY OWNS A 3BHK OR 2.5 BHK AREA ABLE TO ACCOMMODATE THESE NEEDS IN STUDYROOM OR ANOTHER BED ROOM, BUT LIFE BECAME TOO DIFFICULT FOR MIDDLE INCOME GROUPS WHO USUALLY OWNS A 2 BHK. THERE IS NEITHER PRIVACY TO FAMILY LIVING NOR A COMFORTABLE SPACE FOR WORKING. SINCE BEING AN ARCHITECT IT IS OUR RESPONSIBILITY TO CREATE A COMFORTABLE AND HEALTHY ENVIRONMENTS TO SATISFY THEIR NEEDS IN THESE CURRENT PANDEMIC TIMES.



**LOCATION:** gopannapally,  
tellapur road, gachi bowli,  
500075.

**SITE AREA:** 15.45 acres



### SITE SELECTION CRITERIA:

The chosen site is located near to the financial district and Gachibowli which is the IT hub of Hyderabad and there is a national highway in between which makes the site easily accessible without traffic and the location has preserved it's greenery with several lakes around which makes it an ideal location for any housing project..



...1991



.2010



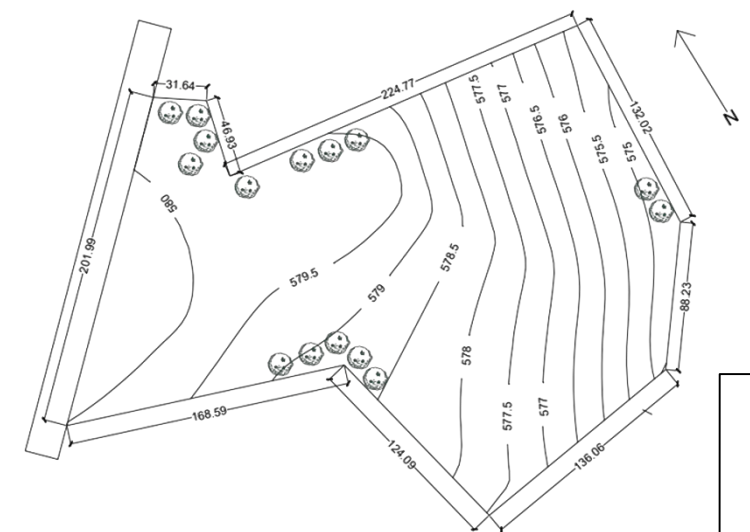
2021..

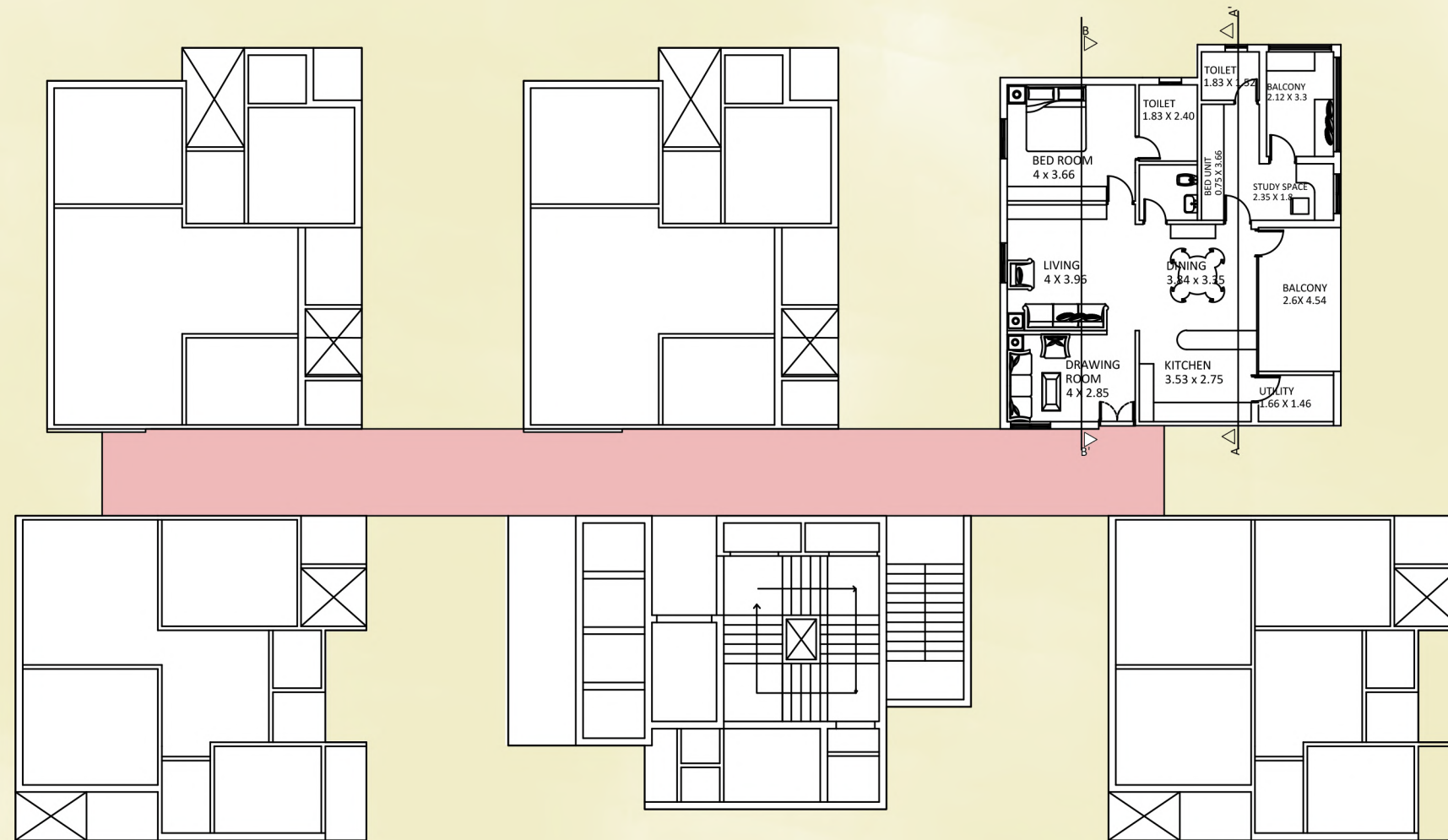


### Hybrid interiors:



PROVISION OF HYBRID INTERIORS FOR A FAMILY OF 4 WHERE AS THE MAIN HEAD OF THE FAMILY IS AN ARCHITECT AND WOMEN IS A HOUSE WIFE AND YOUTUBER AND GIRL CHILD IS IN ENVIRONMENTAL STUDIES AND BOY CHILD IS AN COMPUTER SCIENCE STUDENT INTERESTED IN MUSIC. HENCE A SPACE WHICH IS **HYBRID ACROSS THEIR OCCUPATIONS** WITHOUT COMPROMISING ON FAMILY LIFE INCREASES THEIR COMFORT LEVEL.





TYPICAL FLOOR PLATE OF  
2BHK

SCALE:  
1:50





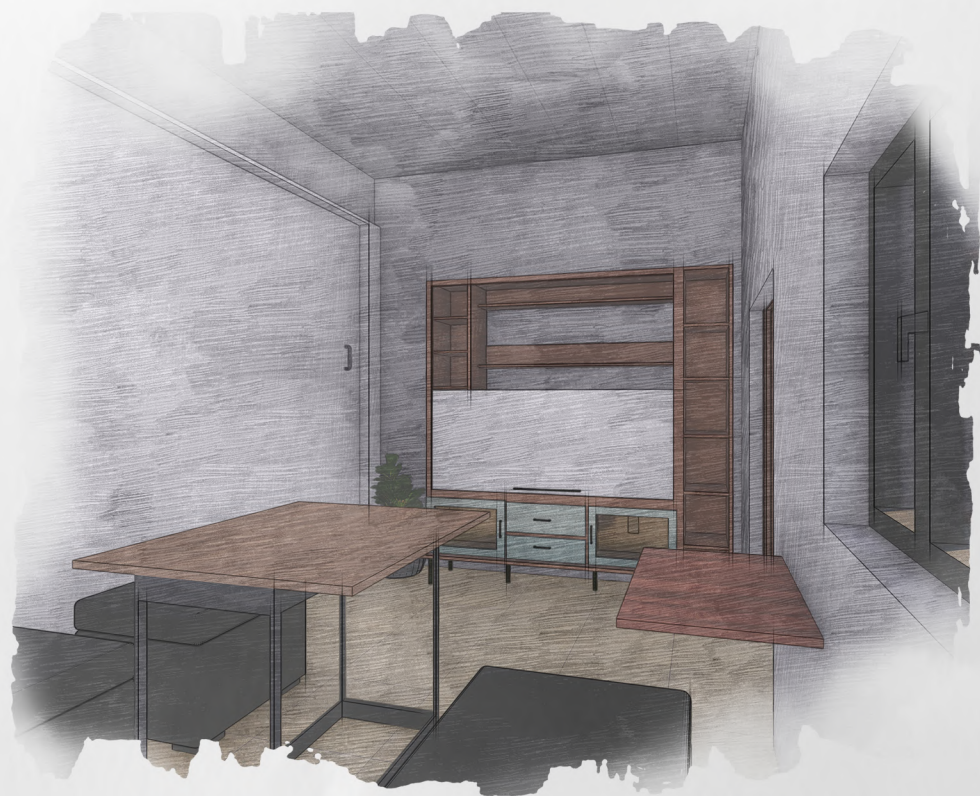


// THE DRAWING ROOM BEING THE ENTRY FOR HOUSE, IT IS EASY TO CONDUCT CLIENT MEETINGS, OFFICE WORKS & TUITION FOR KIDS OVER HERE.

// THE TV UNIT IN DRAWING ROOM SATISFIES RECREATIONAL NEED IN LEISURE TIME. HENCE A HYBRID CONCEPT OF COMBINING WHITE BOARD WITH TV UNIT IS FOLLOWED.

// A HYBRID COFFEE TABLE AND SINGLE SOFA UNITS ARE DESIGNED WHICH CAN BE CONVERTED INTO OFFICE WORKSPACE IF REQUIRED.

// TV : ENTERTAINMENT AND CLIENT PRESENTATION







// LIVING ROOM IS MOSTLY ACTIVE IN DAY TIME TO MAKE IT USEFUL IN NIGHT TIME A SOFA IS DESIGNED WHICH CAN BE CONVERTED INTO BED SO THAT IT CAN BE USED IN NIGHT TIMES ALSO.

// THE PARTITION BETWEEN LIVING AND DRAWING IS DESIGNED AS FOLDABLE PARTITION SO THAT IN TIMES OF FESTIVAL THE DOOR CAN BE FOLDED AND THE ENTIRE SPACE CAN BE USED AS A FAMILY LIVING.

// THE EAST ZONE IS BEING USED AS CHILD PLAY AREA / LEARNING ZONE AND THE WOODEN PLATFORM CAN BE UNFOLDED TO BECOME AN EXTRA BED FOR RELATIVES.

// THIS ZONE ALSO ACTS AS A SHOWCASE ZONE FOR THE ARCHITECT AND THE GIRL CHILD CAN PUT HER PLANTS AS THIS ZONE GETS AN AMPLE AMOUNT OF DAYLIGHT.







// DINING TABLE AND SERVING TABLE PROVIDES ALMOST THE SAME FUNCTION THUS CONVERTING SERVING TABLE TO DINING TABLE PROVIDES EFFICIENT SPACE USAGE.

// THE SPACE DEDICATED FOR DINING TABLE IS ONLY ACTIVE 3-4 TIMES A DAY, THE REMAINING TIME IT IS EMPTY WITHOUT ANY ACTIVITY, THUS TO MAKE IT MULTIFUNCTIONAL A POOL TABLE IS PLANNED UNDER THE PLATFORM OF DINING SO THAT THE TABLE SPACE CAN BE USED FOR PLAYING AS WELL AS DINING.







// THE LADY BEING A YOUTUBER NEED A STUDIO SPACE WITH AN ELEGANT BACKDROP.

// HENCE THE BED ROOM IS CONVERTED INTO STUDIO SPACE WHERE AS THE BOOK SHELF ACT AS A BACKDROP FOR SHOOTS WHICH CAN BE ROTATED TO BECOME A KING SIZE(LARGE) BED.





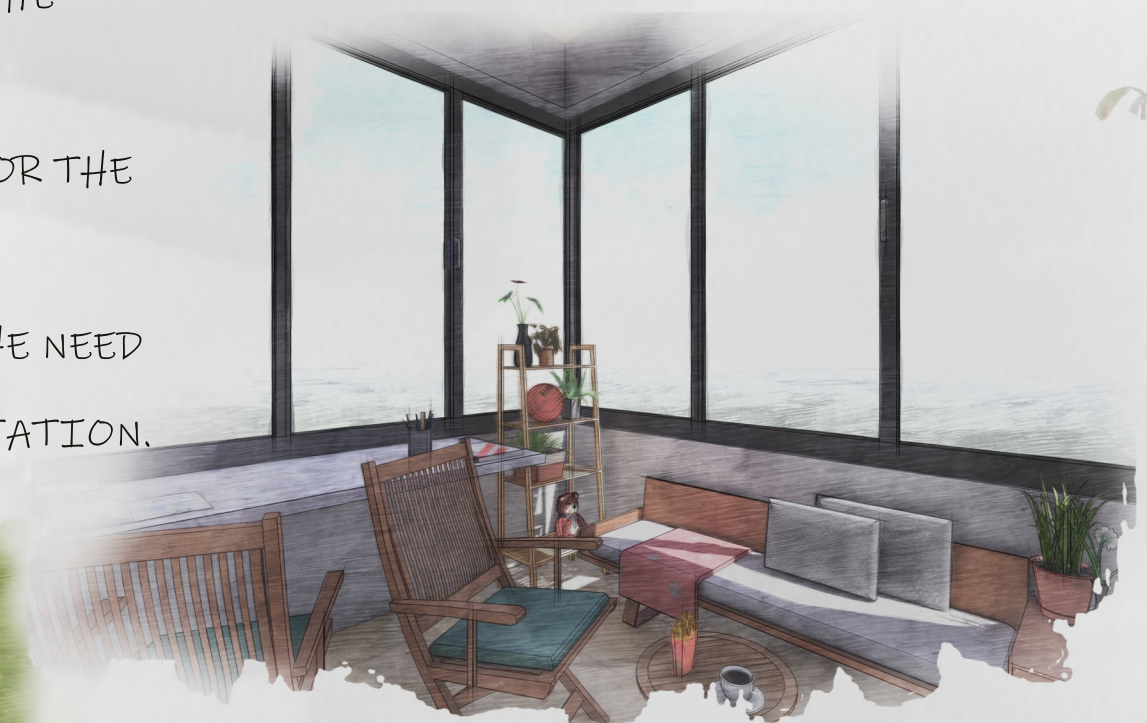
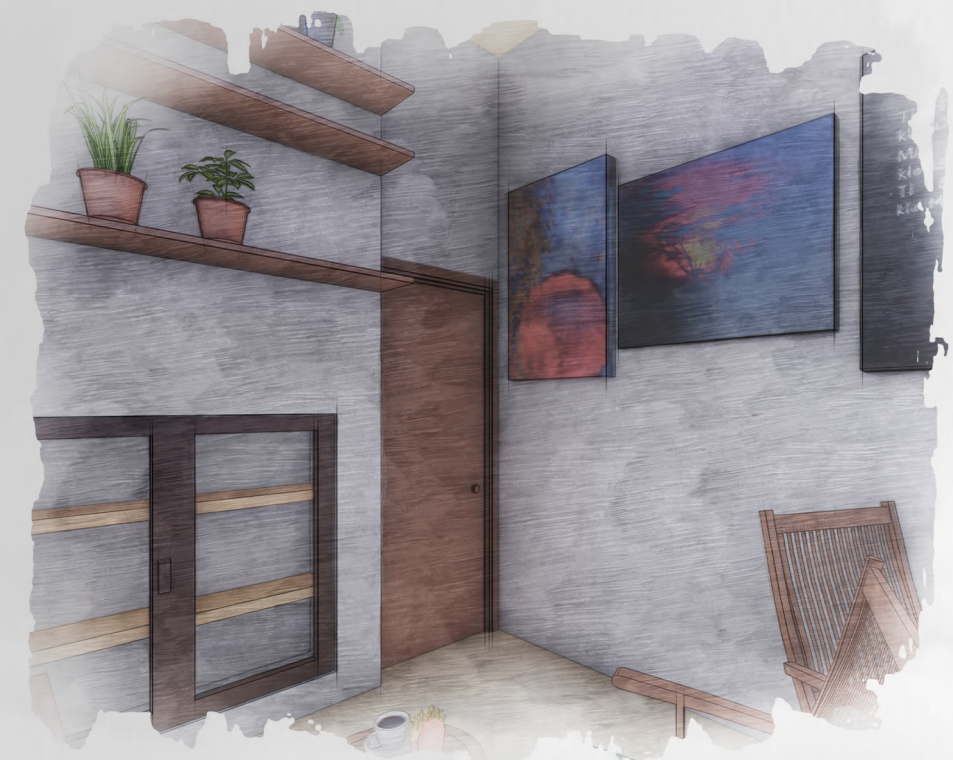


// BUNK BEDS WITH STORAGE UNITS ARE DESIGNED TO ACCOMMODATE THEIR NEEDS AND A MEZZANINE IS GIVEN ABOVE THE TOILET.

// AN INDOOR WORKING SPACE IS PROVIDED FOR THE BOY CHILD WHO IS STUDYING COMPUTER SCIENCE FACING EAST TO ACHIEVE MORNING LIGHT AND TO REDUCE SOLAR HEAT GAIN.

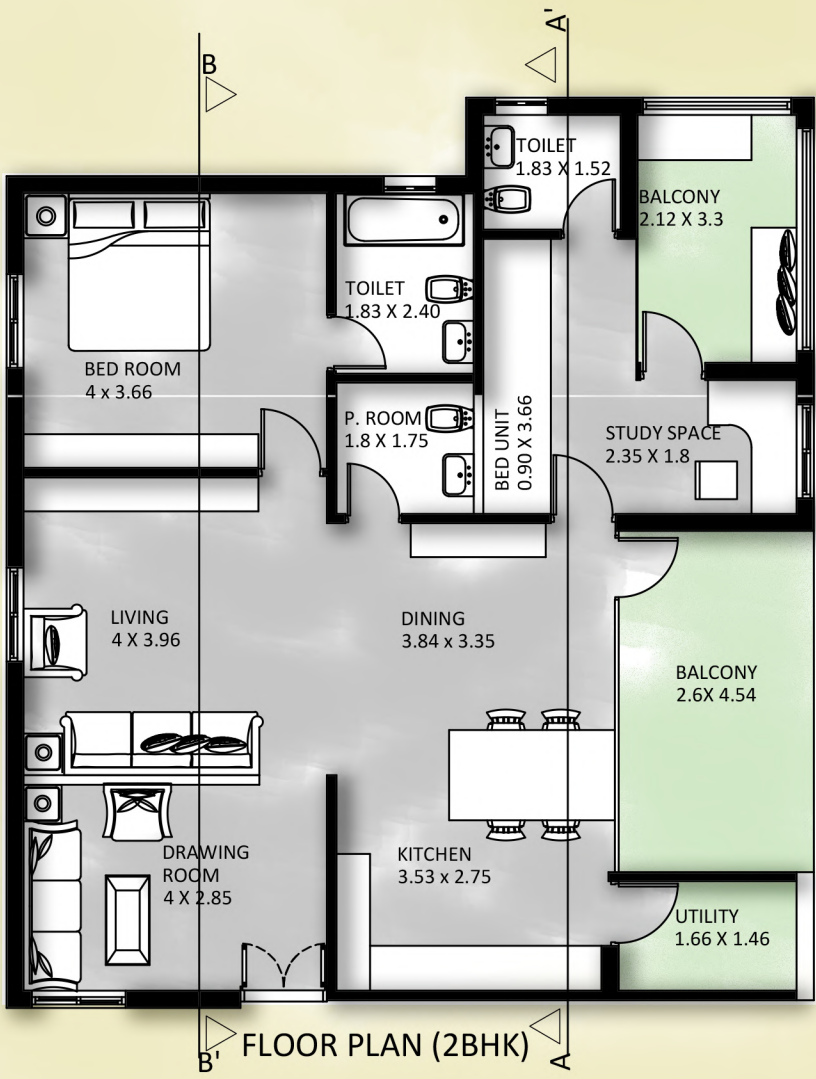
// TO PROVIDE HEALTHY STUDY AND SEATING SPACE IT IS PLANNED IN THE NORTHEAST BALCONY.

// A LARGE BALCONY IS PROVIDED FOR THE GIRL CHILD WHO IS STUDYING ENVIRONMENTAL STUDIES, SINCE SHE NEED A DEDICATED OPEN SPACE FOR PLANTATION.

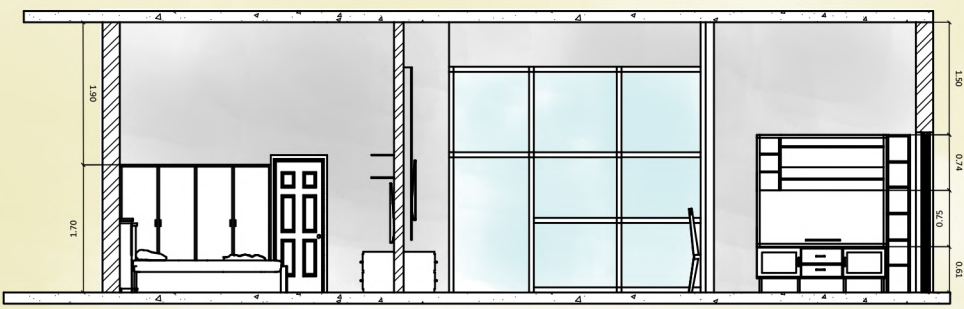




PLAN AND DETAILS



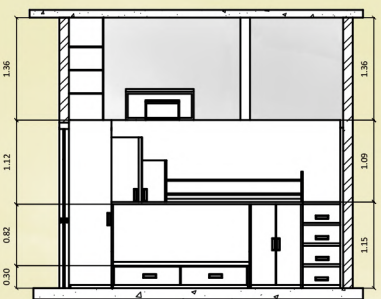
- KEY FEATURES:
- 1. BALCONIES ON EAST AND NORTH EAST TO ACHIEVE HEALTHY MORNING LIGHT.
  - 2. FOLLOWS VASTHU PRINCIPLES
  - 3. AMPLE AMOUNT OF DAYLIGHT AND CROSS VENTILATION



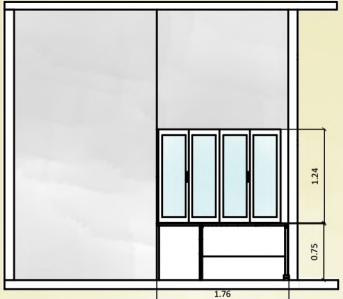
SECTION-BB'



SECTION-AA'



BUNK BED WITH MEZZANINE FLOOR



DINING TABLE/ SERVING TABLE

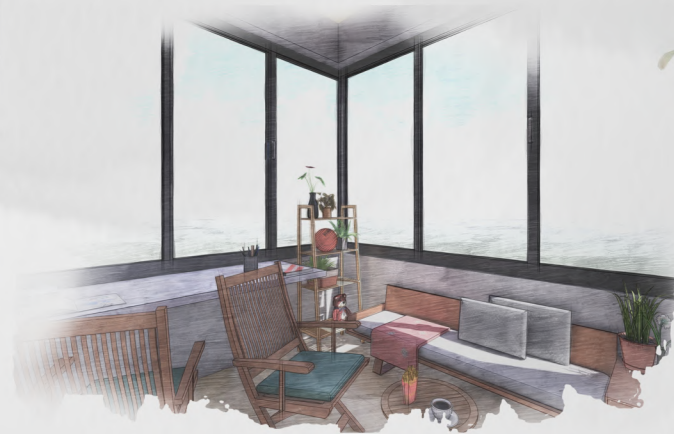
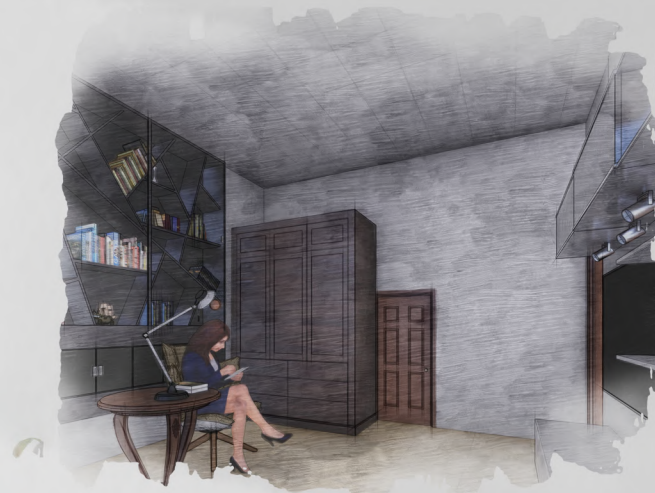
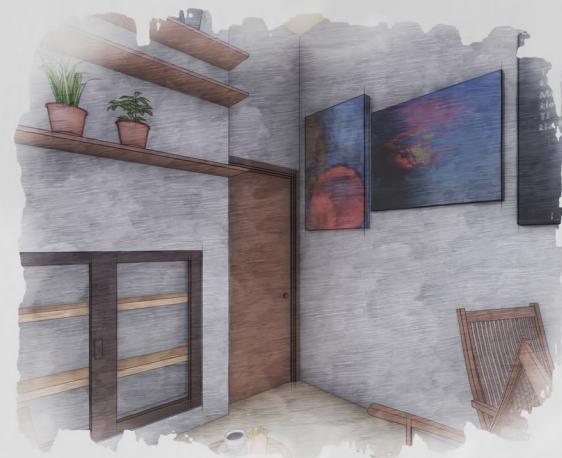


FOLDABLE PARTITION

SCALE:  
1:50







# CONCLUSION:

FROM THE PREVIOUS EXPLANATIONS AND TECHNIQUES IT IS CLEAR THAT FOLLOWING HYBRID CONCEPT IN DESIGNING INTERIORS OF RESIDENTIAL SPACES CREATES AN HEALTHY AND COMFORTABLE LIVING SPACES FOR VARIOUS OCCUPATIONS WITHOUT COMPROMISING ON FAMILY LIVING.

